

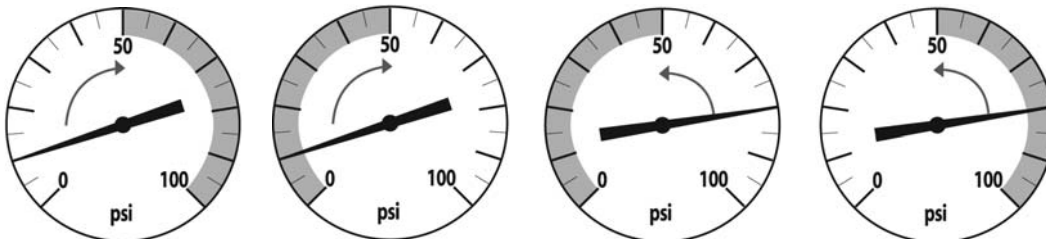
Code	Descriptions of Most Common Options	Availability			
		2WPS Series	5WPS Series	6WPS Series	7WPS Series
-	No Special Features	x	x		
A	Adjustable Dead Band		x		
B	Bellows Actuated	x	x		
BD	Bellows Actuated Differential Pressure		x		
D	Diaphragm Actuated Differential Pressure (DP)	x			
E	External Pressure Adjustments		x		
EE	Two External Pressure Adjustments		x		
F	Flange Base Mounting			x	x
G	Double Diaphragm Extra Sensitive Low Pressure				x
I	One Indicator Light (Not on X Housing)		x		
II	Two Indicator Lights (Not on X Housing)		x		
M	Male Pipe Mounting 1/2" NPT	x	x		
O	High Overpressure Diaphragm	x	x		
P	Panel Mounting				
Q	Double Snap Action (Belleville Spring)	x	x		
R>	Manual Reset Switch on Increase Pressure (2 max.)		x		
R<	Manual Reset Switch on Decrease Pressure (2 max.)		x		
SS	Special Trim Base 316 Stainless Steel	x			
SI	Special Trim Base Teflon® (Not on X Switches)	x			
SY	Special Trim Base PVC (Not on X Switches)	x			
T	Teflon® Protected Diaphragm	x	x		
V	High Temperature Service	x	x		
Z	Viton® Diaphragm	x	x		

Note: Options may vary from none (-) to whatever may be required for a particular application
Options can be combined with the exception of similar types, i.e. SS and SI may not be combined

x Standard options

Note: Adjustment setting available at no extra charge

Below are some illustrations to assist you in the definition and selection of the single pole switch.



To “make” or “break” at 50 psi on rising or decreasing pressures: **Switch is closed in shaded zone on dial**